

# OLYMPUS OMNIMAX<sup>e</sup>



The Terberg OmniMAX<sup>e</sup> has been developed from the ground up to integrate perfectly with our Olympus RCV body. The OmniMAX<sup>e</sup> provides the same superb waste & recycling collection solution as the regular hydraulic version but with the benefits of a low voltage, low noise electric bin lift system. The system has the flexibility to safely handle an impressive range of containers with its robust rear mounted electric lift system. With maximum operational flexibility in mind.



## THE OMNIMAX+e FROM TERBERG... MAXIMUM PERFORMANCE, MINIMAL FUSS.

- Short overhang of 40cm to optimise weight distribution
- Steep container tipping angle of 55 degrees ensures a full container discharge
- High lifting capacity in two wheel container mode of 150kgs
- High lifting capacity in four wheel container mode of 750kgs
- No need for hydraulic lock in four wheel mode, even with pick up arms
- Hydraulically operated folding hopper plate provides full width opening
- 'Plug and Play' cabling to reduce repair and maintenance times
- All body controls to the rear to improve efficiencies
- Fast lifting/discharge cycles times of seven sec (two wheel) and 12 sec (four wheel)
- Container lid catcher mechanism cleverly designed for all containers
- Optional DIN arms to provide full flexibility in operation



### Full width hydraulic hopper plate.

Allows safe and easy loading of loose bags and bulky items at the press of a button.

### Superb tip angle of 55 degrees.

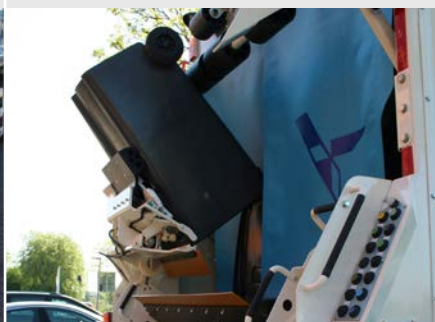
The high tip angle of the OmniMAX+e ensures materials are discharged from containers consistently.

### Fully integrates into the Ros Roca Olympus body and hopper.

Working in harmony to create a flexible, robust system.

### High lifting capacity on wheels.

OmniMAX+e is designed to lift two wheeled containers to their maximum weight capacity.





**LARGE SIDE MOUNTED INSPECTION DOOR TO THE SIDE OF THE REFUSE BODY.**

This allows easy access for cleaning and safe maintenance work.  
A foldable step with handles is optionally available.

**Roof mounted hopper lift rams for opening and closing of the press mechanism.**

The risk of damage is vastly reduced during emptying thanks to the roof mounted hopper lift rams and one-piece body hopper seal.

**Control panel with monitor reveals all possibilities at a glance.**

The driver can simply choose which function they require on screen.  
Discharging of the vehicle body can be performed from the safety of the cab.



**Capacity for two**

Designed to safely handle two industrial containers to a maximum weight of 150kg.

**High lifting capacity for four wheels.**

Four wheel industrial containers with a maximum weight of 750kg are handled with ease.

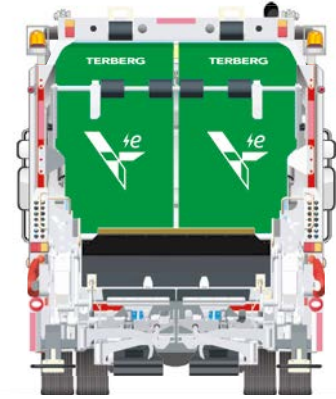
**Optimised overhang of 40cm.**

Some clever thinking with weight distribution in mind resulted in a short, optimal overhang.

**Optional footboards.**


Fully compliant with EN1501-1 the OmniMAX<sup>te</sup> footboards fold away when not in use.





## CARACTÉRISTIQUES

-  Bags and bulky waste

-  EN 840-1 120-360L

-  EN 840-2 500-770L

-  EN 840-2 1000-1200L

-  EN 840-3 770-1300L

Type	OL13W	OL16W	OL19W	OL20W	OL21W	OL23W	OL27W
GVW (tonne)	18-22	18-26	19-28	26-28	26-28	26-28	26-36
Body volume (m3)	14.9	17.5	20.5	21.5	23.3	25.1	28.4
Recommended wheelbase (mm)	3500	4050	4700	4800	5300	5600	6400
Body weight (kg)	5725	5911	6162	6220	6340	6502	6780
Body length (mm)	5425	5975	6625	6785	7225	7625	8325

- Also available as High Plus version
- Volumes from 10m3 to 29m3

Olympus Press body	size	Bin lift	
Maximum width outside dimensions (mm)	2350 / 2530	Cycle time 2 wheeled	7(s)
Throw in width (mm)	1800 / 1800	Cycle time 4 wheeled	12(s)
Volume rear loader with hopper plate at 1.050mm (m3)	1.0 / 1.5	Lifting capacity 2 wheeled	150(kg)
Volume rear loader with hopper plate at 1.550mm (m3)	2.4 / 2.6	Lifting capacity 4 wheeled	750(kg)
Volume hopper (m3)	2.4 / 2.8	Hydraulic operated hopper plate	●
Cycle time press plate (s)	18 / 18	Footboard	■
Processing speed (m3/min)	8.0 / 9.2		

- Standard    ■ Option

\* Containers with different sizes on request

\* All dimensions and weights with a tolerance of ± 3%



TERBERG ENVIRONMENTAL

Newtonstraat 2, 3401JA. IJsselstein, The Netherlands

T +44 (0)1925 458 500, E info@terbergenvironmental.com, I www.terbergenvironmental.com

Terberg Environmental reserve the right to change the specification or design of our equipment at any time without prior notification.