

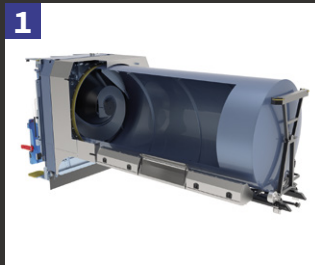
REAR LOADER ROTOLINE



TAKING ROTARY DRUM TECHNOLOGY FURTHER.

With its advanced rotary drum technology, RotoLINE is purpose-built for demanding collection tasks, particularly when handling wet waste. Its modular system architecture, extensive configuration options, and robust, low-maintenance design deliver outstanding cost efficiency and reliable day-to-day operation.

ROTOLINE TECHNICAL FEATURES



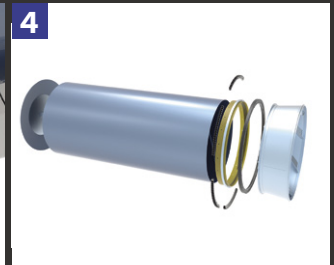
1
Body volumes from 8 - 28 m³.



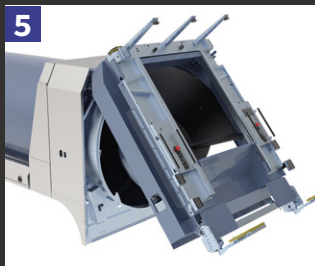
2
Integrated front ventilation system, optionally configurable with rear ventilation.



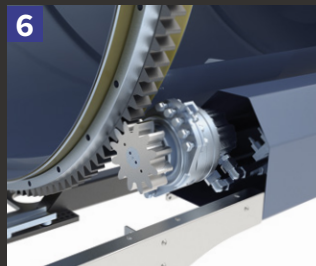
3
150-litre oil tank with sustainable filtration for longer service intervals and reduced maintenance.



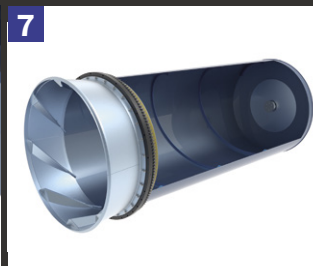
4
Bolt-on paddle wheel system featuring integrated gear ring, bearings, and slewing bearing.



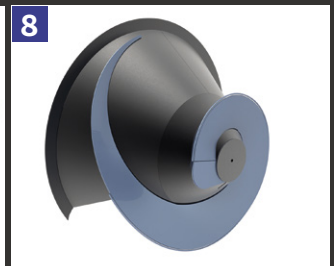
5
Minimal rear overhang, ensuring optimal manoeuvrability in tight spaces.



6
Speed-switchable, direct hydraulic rotary drum drive.



7
Rotary drum available in steel or stainless steel (Pro), featuring a robust 4 mm wall thickness.



8
Reinforced, abrasion-resistant wear edges on the cone for increased durability and service life.

ROTOLINE – KEY BENEFITS AT A GLANCE

Robust and durable: 4 mm rotary drum made of steel or stainless steel (Pro) for maximum service life.

Application-optimised operation: Hydraulic rotary drum drive with freely adjustable drum speeds.

Comfort: Low-noise operation thanks to the sound-insulated rotary drum.

Cost-efficient: High payload capacity due to low tare weight.

Options and accessories: Flexible configuration to meet individual customer requirements.

Service-friendly in every detail: Bolt-on rotary drum drive and paddle wheel ensure optimal accessibility, robust durability, and minimal maintenance requirements.

Maximum availability: Low-maintenance technology, smart remote support and fast Service – powered by Terberg Connect



High-capacity tool and storage boxes on both sides – tools always close at hand.



Optionally available with side cladding on both sides, offering additional advertising space & enhanced noise reduction.

LIFTING SYSTEMS FOR ROTOLINE BODIES

All standard lift systems compliant with DIN EN 1501-5 can be mounted on the RotoLINE. The ideal combination is RotoLINE with the Terberg automatic OmniDEKA bin lift, enabling the emptying of containers from 60 to 1,100 litres.

A rear-integrated mounting frame minimises rear overhang while optimising axle load distribution. The body and lifter are compatible with all common weighing and RFID systems.