

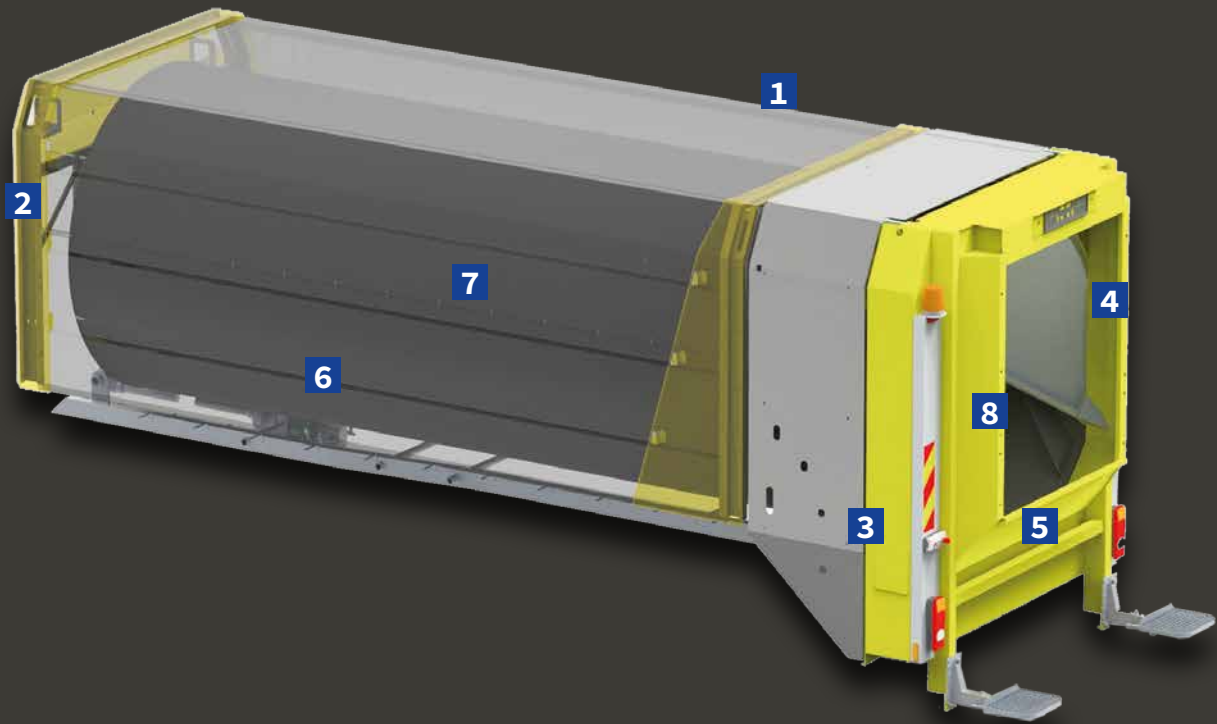
ROTOLYMPUS REAR-LOADER



THE SPECIALIST FOR RESIDUAL AND ORGANIC WASTE COLLECTION.

With a rotary drum design, the ROTOlympus is a reliable solution that excels in managing waste with a high moisture content and industrial waste efficiently. The perfect combination of the possible equipment options makes it one of the most economical waste collection vehicles. The ROTOlympus offers cost-effective waste collection thanks to an optimal combination of the available equipment options.

ROTOLYMPUS REAR-LOADING ROTARY DRUM BODY



1 Body volumes of 5 - 24 m³



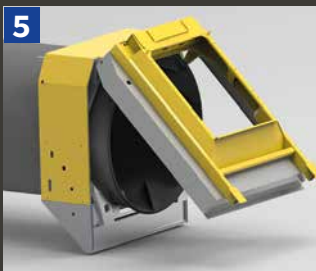
2 Integrated ventilation to the body front bearing



3 Locking mechanism less susceptible to dirt, adjustable and durable



4 Minimal rear overhang, special mounting frame



5 Material-contact surfaces on the rear tailgate constructed from stainless steel



6 Modern design featuring stylish cladding



7 Stainless steel drum, wall thickness 4 mm



8 Restraint flap for organic waste and ash

ADVANTAGES OF THE ROTOLYMPUS ROTARY DRUM BODY

Model versatility: Available in various heights & widths to accommodate different operational needs.

Clever design: Uniform axle load distribution maintained across various loading conditions.

Comfort: Quiet operation thanks to a soundproof rotary drum, user-friendliness ensured via touch control display.

Economical: Optimal payload due to a strong but lightweight construction.

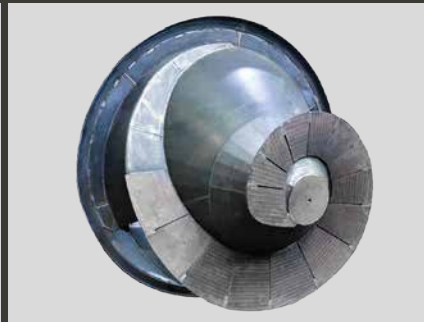
Work safely: Automatic tailgate locking, weight-monitored footboards, ergonomic design.

Optimal uptime: Low wear and minimal maintenance thanks to stainless steel components and a simplified structure with few moving parts.

Options: A wide range of additional equipment and options enables a customised solution tailored to customers' specific requirements.



Stainless steel rotating drum with catcher



Cone with wear plates



ABRA bin cleaning system option

MULTI-FUNCTION TOUCH DISPLAY



All ROTOLympus bodies feature a 5-inch multi-function touch display in the cab, allowing for fuss-free working operations.

In the event of a malfunction, an error code is displayed on the control panel for swift and effective troubleshooting. Additionally, the rotation of the drum can be changed from right-hand to left-hand rotation via the control panel, facilitating the emptying of the body.

ROTOLYMPUS MODELS

ROTOLYMPUS STYLING DESIGN

This modern-styled series provides ample advertising space on both sides and offers additional noise reduction thanks to its cladding.

Body volumes ranging from 10 to 24 m³, suitable for two to four-axle chassis, provide optimal volume solutions for waste collections in urban and rural areas.

ROTOLYMPUS NAKED DESIGN

This design variant, featuring body volumes from 10 to 24 m³, has an exposed rotary drum that transitions to the rear section through conically shaped plates, facilitating better diversion of branches and other obstacles. Anodized aluminum sheets in the lower area provide necessary physical touch protection.

ROTOLYMPUS MINI

This model series has an impressive narrow design matching the chassis width and is offered in volumes ranging from 5 to 9.5 m³. It's the ideal solution for narrow collection areas and low overhead restrictions. The ROTOLympus Mini 205m is available in styling design, while the 205d comes in styling and naked design options.



LIFTER FOR ROTOLYMPUS BODIES

All commercially available bin lift systems meeting DIN EN 1501-5 standards can be mounted on the ROTOLympus.

The ideal pairing is with the Terberg automatic lifter OmniDEKA, capable of emptying containers ranging from 60 to 1,100 litres.

The integrated mounting frame in the rear part reduces the vehicle's rear overhang, optimizing the axle load distribution.

ROTOLYMPUS REAR-LOADER ROTARY DRUM BODY



Type	Capacity [m ³]	Wheelbase [mm]	A width [mm]	B length [mm]	C height* [mm]	Axes	Permissible GVW
ROTOLYMPUS MINI							
205m	5	3100	1885	4160	1930	2	7,5t
205d	8,5	3200-3300	2048	4310	2113	2	12t-13t
205d	9,5	3500-3600	2048	4710	2113	2	13t-15t
ROTOLYMPUS							
203	10	3100-3300	2300	4530	2430	2	15t-16t
203	11	3500-3600	2300	4780	2430	2	15t-16t
203	12	3550-3700	2300	4990	2430	2	15t-18t
203	13	3800-3900	2300	5290	2430	2	18t
205	14	3800-4000	2490	5320	2430	2	18t
205	15,5	4100-4200	2490	5670	2430	2	18t
205	16,5	3200-3600	2490	5750	2430	3	26t
205	17,5	3500-3700	2490	6000	2430	3	26t
205	18	3600-3900	2490	6200	2430	3	26t
205	20	3600-4200	2490	6580	2430	3	26t
205	22	4200-4500	2490	7110	2430	3 / 4	26t / 32t
205	24	4200-4500	2490	7610	2430	4	32t

*Height from chassis top edge